



PIPE DINING TABLE



SKU: N/A

Categories: [Healthcare & Assisted Living](#), [Luxury Outdoor \(+ Indoor\)](#), [Pipe](#)

Tags: [12-14 Weeks](#), [Aluminum](#), [Dining Tables](#), [Outdoor](#), [Removable Cushions](#)

ADDITIONAL INFORMATION

Construction	Powder coated aluminum frame / Ceramic top
Overall Height (in)	30
Overall Width (in)	36
Overall Depth (in)	79

[Powdercoat Finishes](#)

Standard

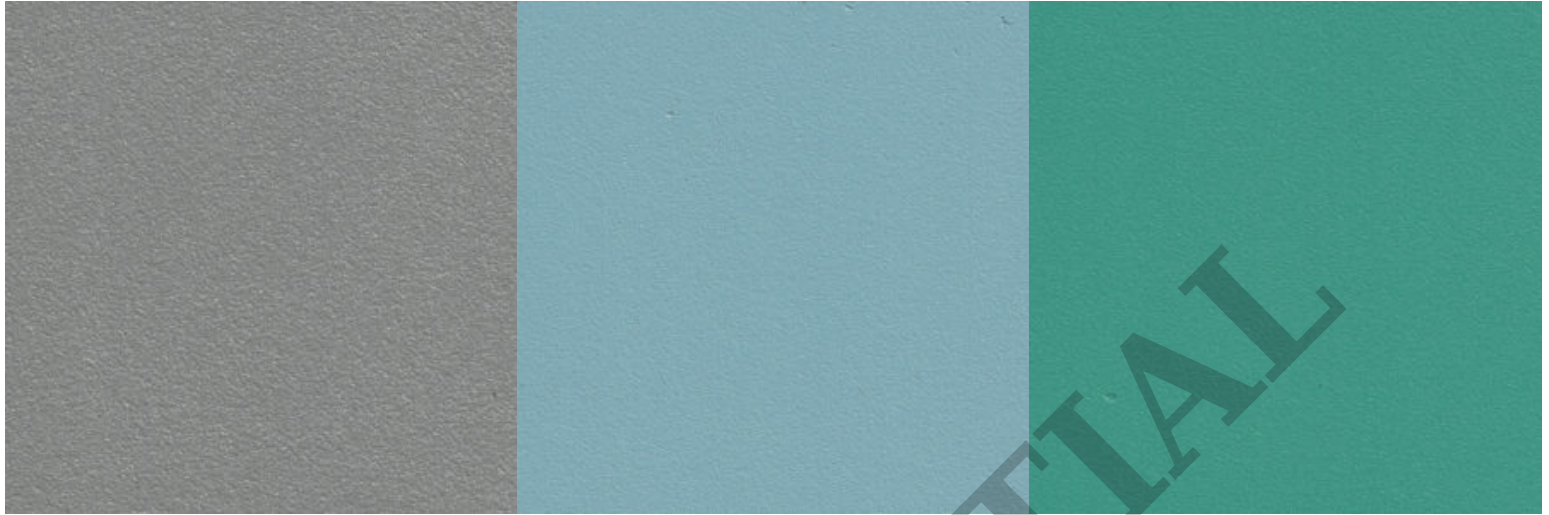


Anthracite

Brown

Gray

CONFIDENTIAL



Vivid Blue

Jupiter Green

Orange

CONFIDENTIAL

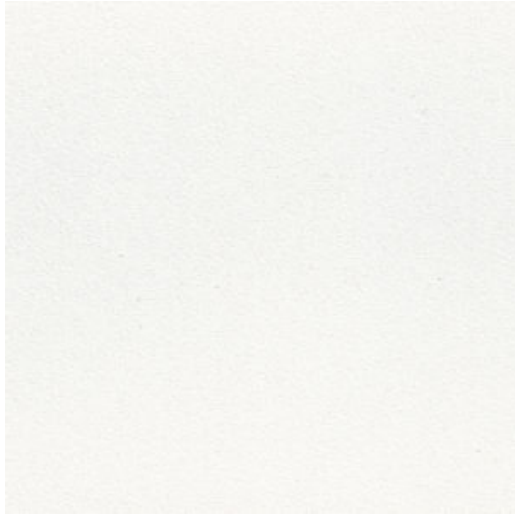


Terra Cotta

Carbon

Cream White

CONFIDENTIAL



Gloss Silver



Bamboo



Walnut

CONFIDENTIAL



Teak

Click to expand

CONFIDENTIAL

Spectrum



CONFIDENTIAL



Click to expand

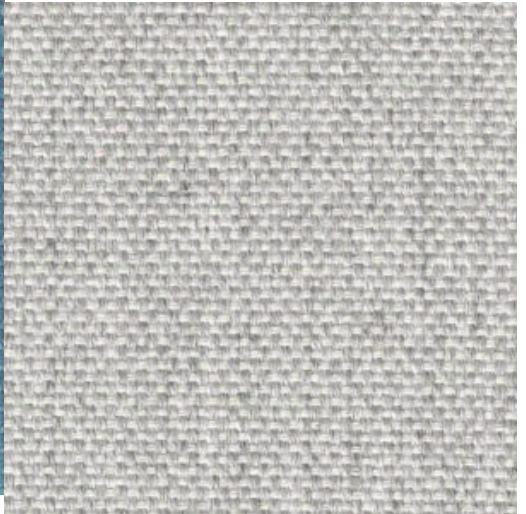
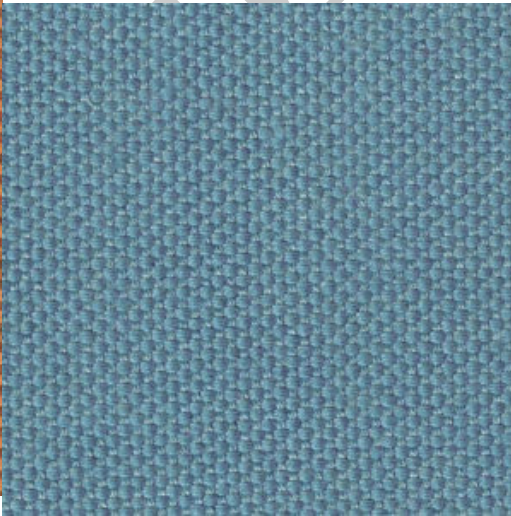
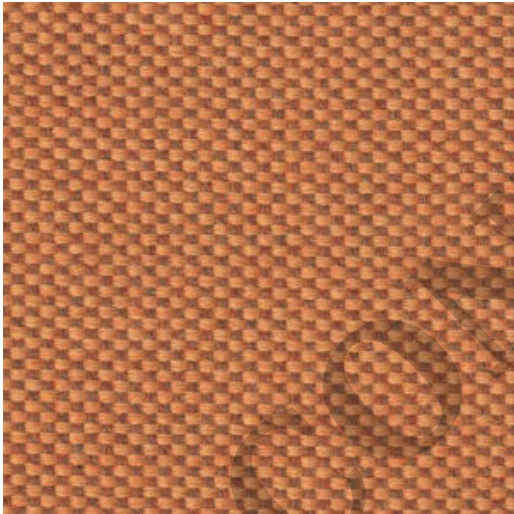
[Upholstery | Fontelina](#)





Fontelina Light Gray

[Upholstery | SEF](#)





Green

Canvas

Dark Gray

[Ceramic Tops](#)





BB Gray

Carrara Marble

[Download Spec Sheet PDF](#)

CONFIDENTIAL