



## LOTUS CAFÉ TABLE B



SKU: N/A

Categories: [Healthcare & Assisted Living](#), [Luxury Outdoor](#), [Lotus](#)



## ADDITIONAL INFORMATION

**Construction**

Powder coated aluminum frame / Ceramic top

**Overall Width (in)**

29.50

Download indoor catalog. [Click Here](#) -- Download outdoor catalog. [Click Here](#)

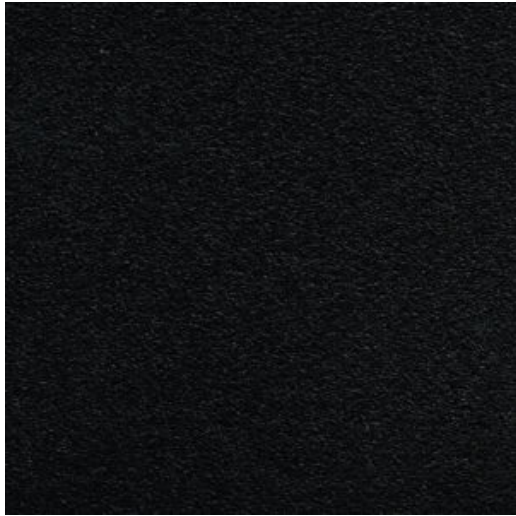


Overall Height (in)

29.5

[Powdercoat Finishes](#)

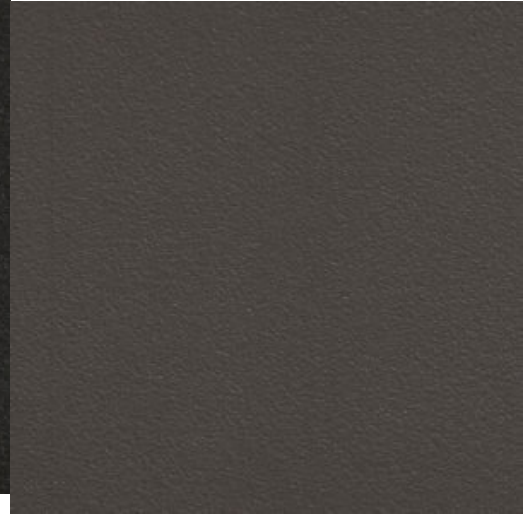
Standard



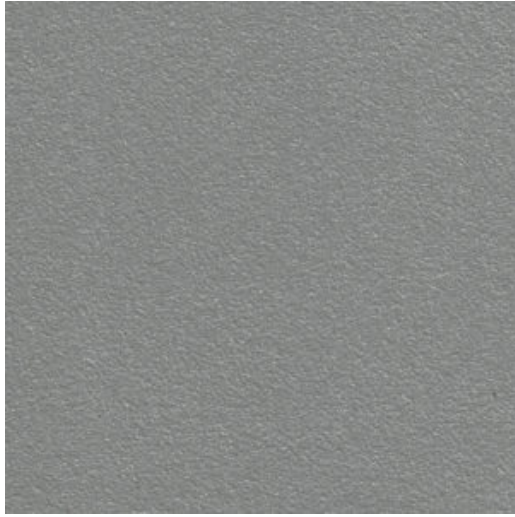
Anthracite



Brown



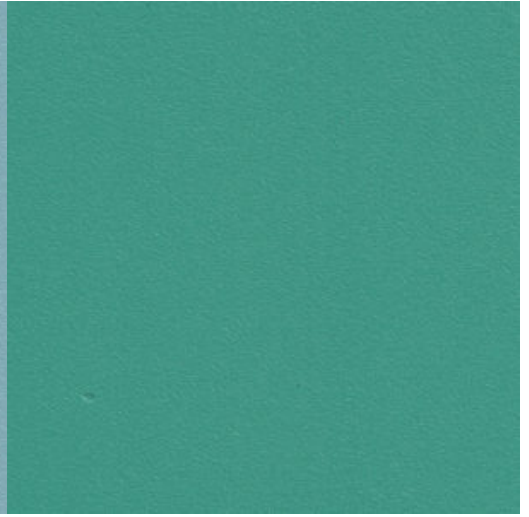
Gray



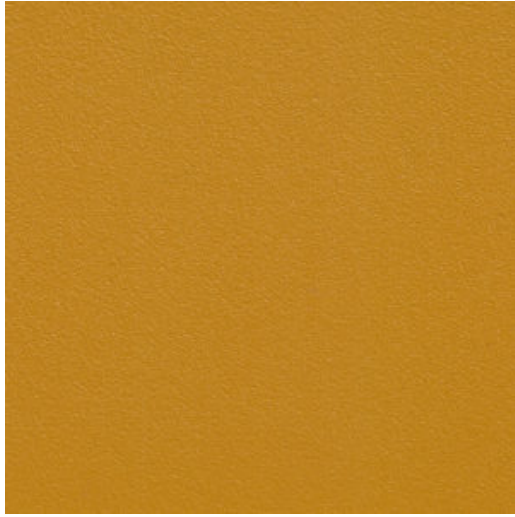
Vivid Blue



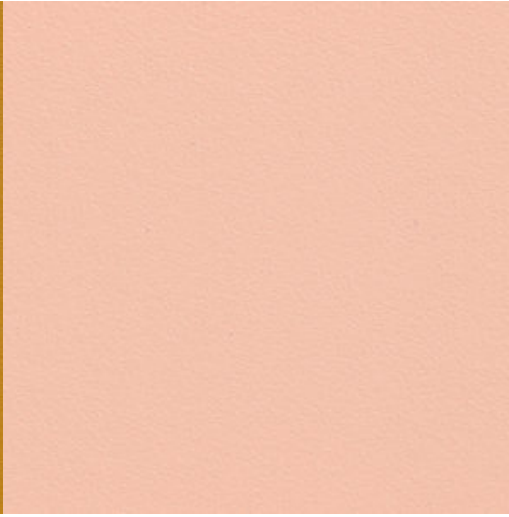
Light Blue



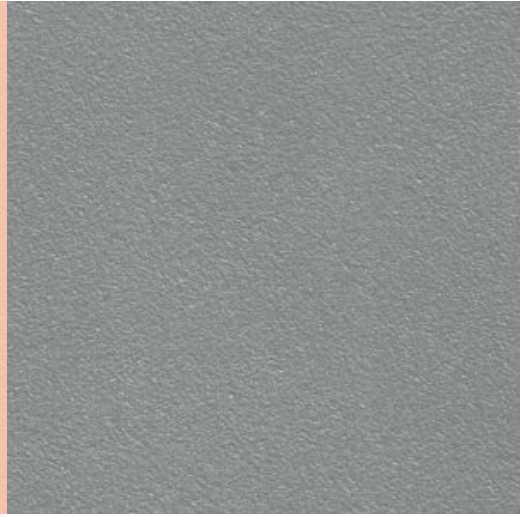
Orange



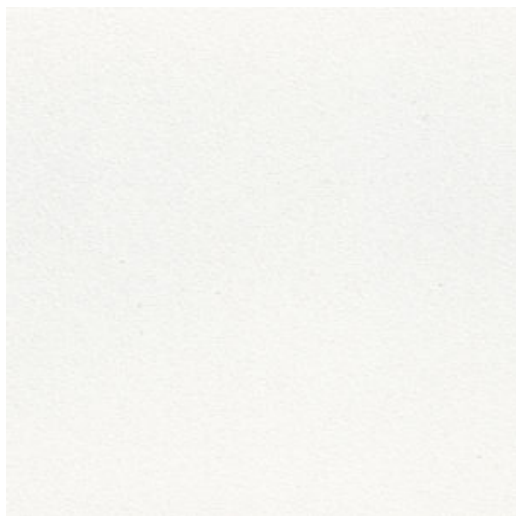
Terra Cotta



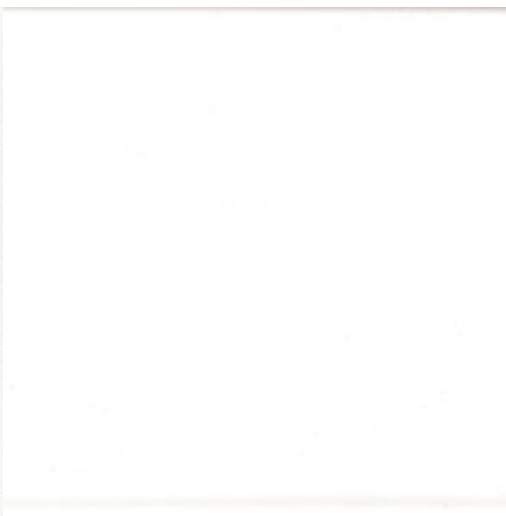
Carbon



Cream White



Gloss Silver



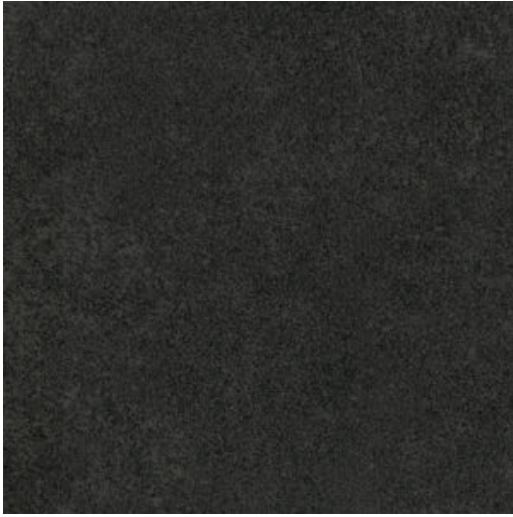
Walnut



Amber Teak

[Ceramic Tops](#)

Download indoor catalog. [Click Here](#) -- Download outdoor catalog. [Click Here](#)



BB Gray



Carrara Marble

[Download Spec Sheet PDF](#)

**Download indoor catalog.** [Click Here](#) -- **Download outdoor catalog.** [Click Here](#)